



# CUPA 25

---

*Non-carbonated **slate** formed by tectonic compression.  
**Blue black** slate with thin laminations and a **smooth surface**.*





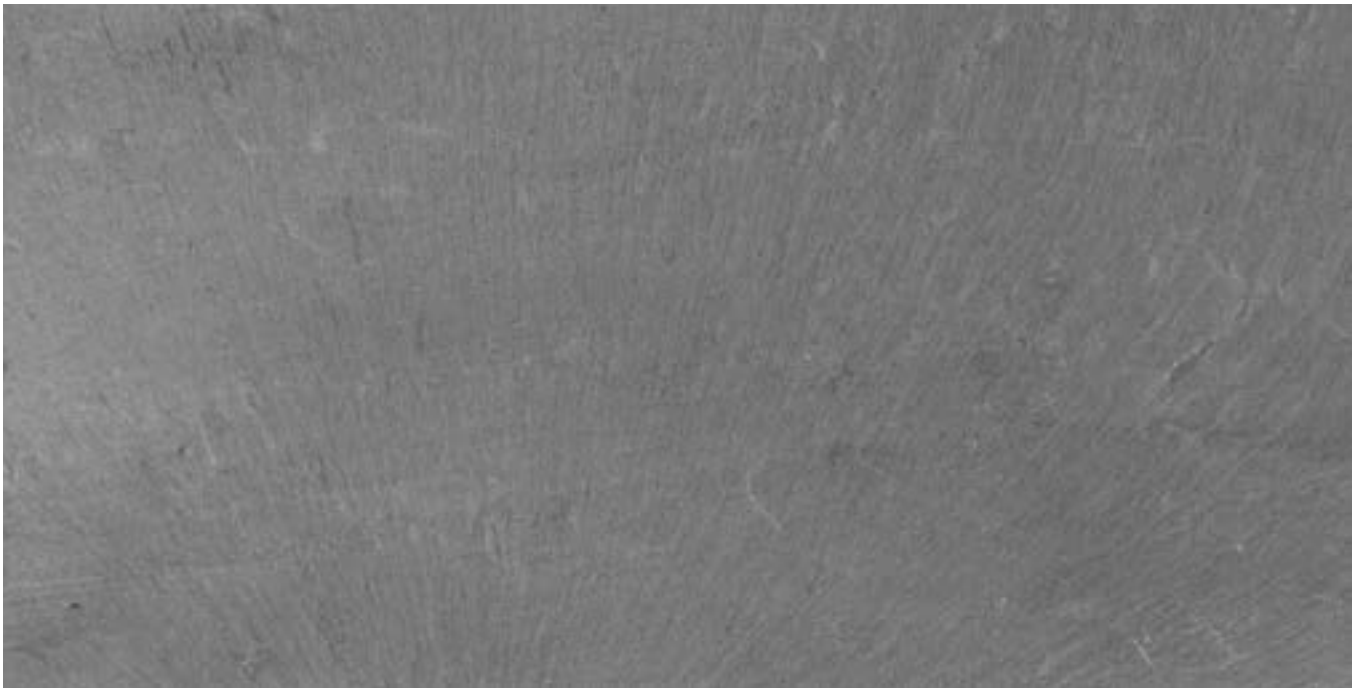
Quarry Las Arcas Prada. San Pedro de Trones (León) Spain.



Operating since 1983.



Sizes: 25x15 - 50x38 cm  
Thickness: 3.75 - 5 - 7 - 9 mm



## Formats



Rectangular



Bullnose



Rhomboid



Ogival



Innova

## Selections

R

H

NATURAL

## Technical specifications

ABSORPTION	CARBONATE NON CARBONATED	MOR CHARACTERISTIC	SO <sub>2</sub> EXPOSURE TEST	THERMAL CYCLE TEST	FREEZE THAW TEST
0,35% Code: W1 (< 0,4%)	0,50% Fullfil (< 2%)	Longitudinal 61,2 MPA	S1	T1	Fullfil < 0,6%

## International certifications



European Standard: EN 12326 | British Standard: BS 680 Part 2